



# SONIC TOOTHBRUSH

User Manual



# SAFETY INFORMATION

Read all instructions carefully before use and save it for the future.

## Danger

Keep the charging base away from water. Do not place or store over or near water contained in the bathtub, washbasin, etc. Do not immerse the charging base in water or any other liquid. After cleaning, make sure the charging base is completely dry before connecting it to the mains.

## Warning

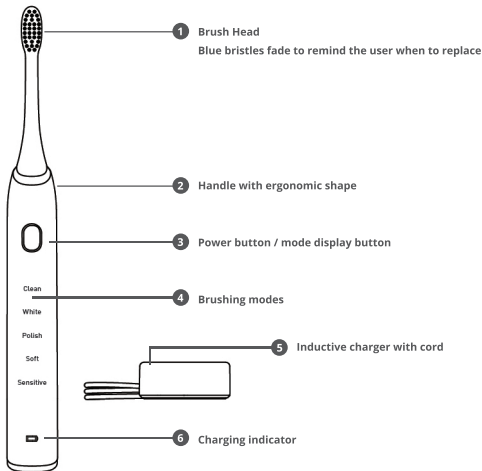
- Check the cord before you connect the local mains.
- Never use the charging base if it is damaged in any way.
- If the appliance is damaged in any way (including brush head, toothbrush handle), stop using it.
- Do not use the charging base near a heated surface.
- Children should be supervised while using this product.
- Unplug the product after charging.
- Do not plug into an outlet with a voltage other than specified.
- Replace brush heads every 3 months.

# IMPORTANT INFORMATION

## **Congratulations on your purchase of a 360PRO Sonic Toothbrush!**

- Do not clean the brush head, handle or charging base in the dishwasher.
- If you have had oral or gum surgery in the previous 2 months, consult your dentist before using it.
- If you have medical concerns, consult your doctor before you use the appliance. The appliance complies with the safety standard for electromagnetic devices. If you have a pacemaker or other implanted device, consult your doctor before use.
- This appliance has only been designed for cleaning teeth, gums and tongue. Do not use it for any other purpose.
- The toothbrush is a personal care device, suggested use for single patient only.
- Stop using a brush head with crushed or bent bristles. Replace the brush head every 3 months or sooner if signs of bristle fade appear.
- Do not use other brush heads other than the ones recommended by the manufacturer.
- When you start to use the brush you may experience a tingling sensation. This is normal and will ease after a few days. You may want to use the sensitive mode for the first 2 weeks of use.
- The 360PRO Sonic Toothbrush has a 2-minute timer and will switch off after 2 minutes. There will be a pause every 30 seconds. This is designed to ensure you spend 30 seconds on each mouth section.
- To stop the brush during a two minute cycle hold down the power button for two seconds.

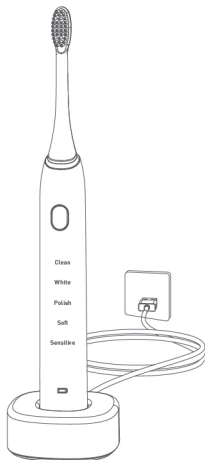
# PRODUCT COMPONENTS



# 360PRO SONIC TOOTHBRUSH

Model No	1741-03
Waterproof	IPX7
Function Operation	Button Press
Color	Black, White, Pink
Charging Type	Induction charger
Charging Time	Overnight
Battery	Lithium rechargeable battery
Full Battery Charge	Lasts about 1 month (if used 4 minutes daily)
Brush Modes	<b>5 different modes, each mode will light up when relevant mode function is on</b> Clean mode: 34800 brush strokes per minute White mode: 33000-40000 brush strokes per minute Polish mode: 35000 brush strokes per minute Soft mode: 33000 brush strokes per minute Sensitive mode: 28200 brush strokes per minute
Package Contents	2 Brush heads 1 Handle with ergonomic shape 1 Wireless charger 1 User manual

# BATTERY CHARGING



- Charge overnight before first use.
- When the battery power is low, the device will vibrate 4 times and the LED indicator will flash in red to remind the user to charge the battery.
- Put the device into charging base and confirm it is connected to the power source correctly.
- The LED indicator will flash white during battery charging.
- The LED indicator light will be a solid white when the battery is fully charged.
- Leave on charging bank overnight every 3 – 4 weeks to maximise battery life.
- The Lithium battery cannot be overcharged but the battery life can be improved by more frequent charging.

# BRUSHING MODES

## CLEAN

The ultimate in the removal of plaque.

## WHITE

Whitening mode of 2 minutes to remove surface stains.

## POLISH

Polish the teeth.

## SOFT

Extra gentle mode for sensitive teeth and gums.

## SENSITIVE

Gentle teeth and gum cleaning.

34,800 brush strokes/minute

33,000-40,000  
brush strokes/minute

35,000 brush strokes/minute

33,000 brush strokes/minute

28,200 brush strokes/minute



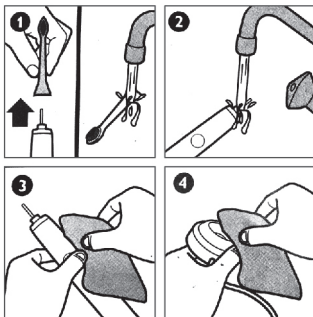
# USING THE 360PRO

1. Place the brush head in your mouth with the bristles at a 45-degree angle to your teeth.
  2. Switch on desired brushing mode.
  3. Start in a specific zone E.g. Upper outside. The 30 second timer will remind you to switch zones.
  4. The 360PRO Sonic Toothbrush has a 2-minute cycle time. After the cycle is complete the brush will switch off. After each 30 second period there will be a pause.
  5. Hold the handle with a gentle grip and lightly move from the gums to the teeth and back. Only use very light pressure and let the brush vibrations do the cleaning.
- 
- The 360PRO Sonic has 5 brushing modes from 28,200 to 40,000 pulses per minute to suit the individual requirements.
  - Pressing the power button will cycle through the brushing modes.
  - To stop the brush during a two minute cycle hold down the power button for two seconds.



# CLEANING YOUR TOOTHBRUSH

- Thoroughly rinse the brush head and bristles after each use.
- Occasionally remove brush head to clean handle and head separately under running water. Do not immerse in water.



- Unplug the charging unit before cleaning it.
- Do not clean any parts of the system in the dishwasher.
- Regular cleaning will ensure the life of your 360PRO Sonic Toothbrush, in particular ensure the charging 'well' is clean and dry.

# DISPOSING OF YOUR TOOTHBRUSH

- This product contains a rechargeable battery. It is recommended that the consumer does not attempt to remove the battery from the brush handle at any time. In the interests of protecting the environment, please recycle this unit properly. Ask your local waste management office if they accept any of the toothbrush components. for recycling.
- New brush heads are available through [www.my360pro.co.nz](http://www.my360pro.co.nz)

# WARRANTY

- The 360PRO Sonic Toothbrush is guaranteed to function properly for two years from date of purchase. Defects due to faulty materials and workmanship will be repaired or replaced.
- The unit must only be repaired by the 360PRO Service Team or the warranty will be voided.
- Proof of purchase may be required.

# WARRANTY EXCLUSIONS

Items not covered under warranty:

- Brush heads
- Damage caused by misuse, abuse, neglect, lack of cleaning, alterations or unauthorised repair.
- Normal wear and tear including chips, scratches, abrasion and discoloration or fading.

Thank you again for choosing the 360PRO Sonic Toothbrush.



360PRO Customer Care [www.my360pro.co.nz](http://www.my360pro.co.nz) (+64) 9 477 0285

PO Box 101 613, NSMC, Auckland, NZ 0745

