



360PRO Customer Care www.my360pro.co.nz
(+64) 9 477 0285 PO Box 101 613, NSMC, Auckland, NZ 0745



**360PRO EVO SONIC TOOTHBRUSH
USER MANUAL**

SAFETY INFORMATION

Before using this product please read this manual carefully and keep for future reference. Please refer to www.my360pro.co.nz for a copy of the User Manual

DANGER

Keep the charging base away from water. Do not place or store over or near water contained in the bathtub, washbasin, etc. Do not immerse the charging base in water or any other liquid. After cleaning, make sure the charging base is completely dry before connecting it to the mains.

WARNING

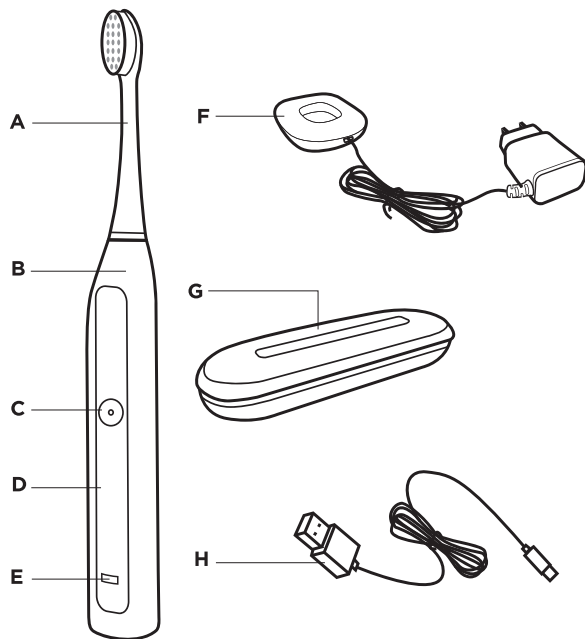
- Check the cord before you connect to the local mains.
- Never use the charging base if it is damaged in any way.
- If the appliance is damaged in any way (including brush head, toothbrush handle), stop using it.
- Do not use the charging base near a heated surface.
- Children should be supervised to ensure they do not play with the appliance.
- The appliance is not intended for use by persons (including children) with reduced physical, sensory or mental capabilities, or lack of experience and knowledge, unless they have been given supervision or instruction concerning use of the appliance by a person responsible for their safety.
- Unplug the product after charging.
- Do not plug into an outlet with voltage other than specified.
- Replace brush heads every 3 months.
- For recharging the battery only use the detachable supply unit provided with the appliance.

IMPORTANT INFORMATION

Congratulations on your purchase of a 360PRO EVO Sonic Toothbrush!

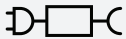
- Do not clean the brush head, handle or charging base in the dishwasher.
- If you have had oral or gum surgery in the previous 2 months, consult your dentist before using.
- If you have medical concerns, consult your doctor before you use the appliance.
- The appliance complies with the safety standard for electromagnetic devices. If you have a pacemaker or other implanted device, consult your doctor before use.
- This appliance has only been designed for cleaning teeth, gums and tongue. Do not use it for any other purpose.
- The toothbrush is a personal care device, suggested use for single patient only.
- Stop using a brush head with crushed or bent bristles. Replace the brush head every 3 months
- Do not use other brush heads other than the ones recommended by the manufacturer.
- When you start to use the brush, you may experience a tingling sensation. This is normal and will ease after a few days. You may want to use the sensitive mode for the first 2 weeks of use.
- The 360PRO EVO Sonic Toothbrush has a 2-minute timer and will switch off after 2 minutes. There will be a pause every 30 seconds. This is designed to ensure you spend 30 seconds on each mouth section.
- To stop the brush during a two-minute cycle hold down the power button.
- This appliance contains batteries that are not replaceable.

PACKAGE CONTAINS



- A. Brush head
- B. Handle with comfort grip
- C. On/Off button
- D. Brushing mode
- E. Charging indicator
- F. Charging base
- G. Travel Charging case
- H. USB 2.0 — micro USB cable

360PRO EVO SONIC TOOTHBRUSH

Model No	360PROST073B
Waterproof Rating	IPX7
Function Operation	Button Press
Colour	Black
Charging Type	Induction charger
Charging Time	Overnight
Battery	Rechargeable Lithium
Full Battery Charge	Up to 60 days depending on brush mode used (based on 2 minutes daily).
Brush Modes	CLEAN WHITE POLISH SOFT SENSITIVE
Package Contains	1 x Evo sonic toothbrush in black 1 x Charging base with NZ wall plug 2 x Soft brush-heads 1 x Travel charging case 1 x USB charging cable
	This symbol refers to the detachable supply unit for charging purposes

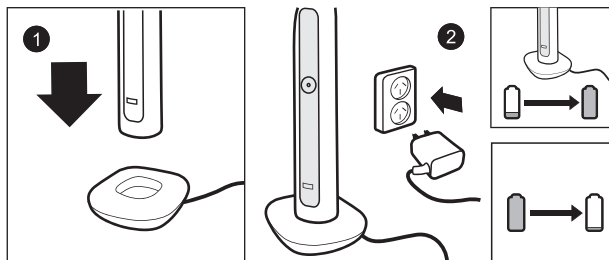
HOW TO CHARGE

Insert the toothbrush handle into the charging base to charge. Electricity quality is shown on the LED electricity quality display.

The charging indicator will blink while charging and turn to a continuous light when battery is fully charged. It will take about 15 hours to fully charge the brush and it can be used up to 60 days depending on what brush mode is used most often.

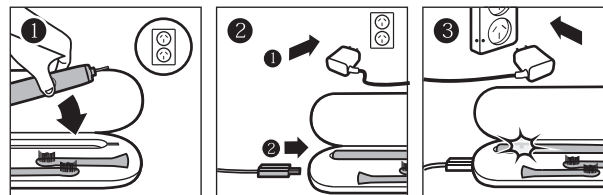
If the battery is low, the LED light will flash and the speed of motor will reduce. When the battery runs out, the motor will stop working.

It is recommended that you fully charge the unit before use.



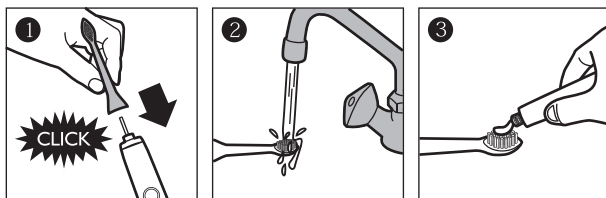
TRAVEL CHARGING CASE

Put the toothbrush into travel charging case, connect the micro USB cord to the rechargeable travel case. The charging indicator should blink through the charging process and turn to continuous light when battery is fully charged.



HOW TO USE YOUR EVO SONIC BRUSH

1. Place the brush head in your mouth with the bristles at a 45-degree angle to your teeth.
2. Switch on desired brushing mode.
3. Start in a specific zone E.g. Upper outside. The 30 second timer will remind you to switch zones.
4. The 360PRO EVO Sonic Toothbrush has a 2-minute cycle time. After the cycle is complete the brush will switch off. After each 30 second period there will be a pause.
5. Hold the handle with a gentle grip and lightly move from the gums to the teeth and back. Only use very light pressure and let the brush vibrations do the cleaning.



BRUSHING MODES

CLEAN

The ultimate in plaque removal
70000 movement/min*

WHITE

Helps to remove surface stains
70000 movement/min*

POLISH

To brighten and polish teeth
90000 movement/min*

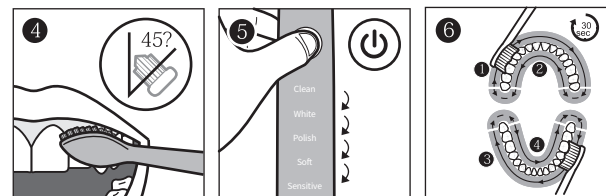
SOFT

Gentle mode
66000 movement/min*

SENSITIVE

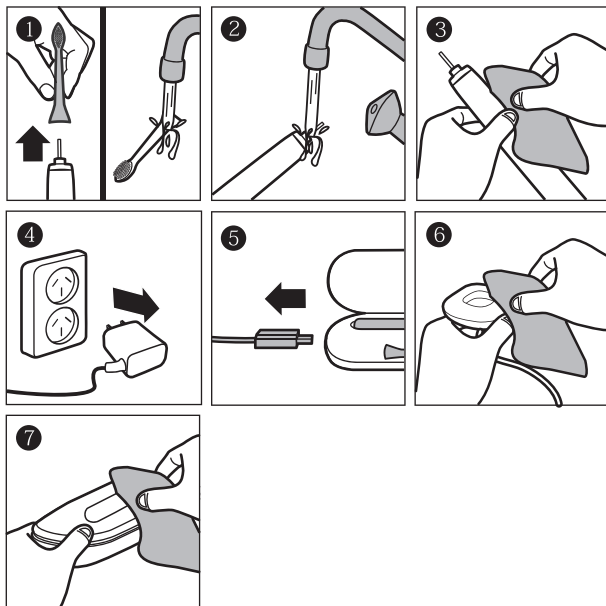
A gentle clean for sensitive teeth & gums
62000 movement/min*

* Movement = brush strokes * 2



HOW TO CLEAN YOUR EVO SONIC BRUSH

- Thoroughly rinse the brush head and bristles after each use.
- Occasionally remove brush handle to clean handle and head separately under running water. Do not immerse in water.
- Unplug the charging unit before cleaning it.
- Do not clean any parts of the system in the dishwasher.
- Regular cleaning will ensure the life of your 360PRO EVO Sonic Toothbrush, in particular ensure the charging 'well' is clean and dry.



DISPOSING OF YOUR TOOTHBRUSH

This product contains a rechargeable battery. It is recommended that you do not attempt to remove the battery from the brush handle at any time. In the interests of protecting the environment, please recycle this unit properly. Ask your local waste management office if they accept any of the toothbrush components for recycling.

New brush heads are available through www.my360pro.co.nz

WARRANTY

The 360PRO Sonic Toothbrush is guaranteed to function properly for two years from date of purchase. Defects due to faulty materials and workmanship will be repaired or replaced.

- The unit must only be repaired by the 360PRO Service Team or the warranty will be void.
- Proof of purchase may be required.

WARRANTY EXCLUSIONS

Items not covered under warranty:

- Brush heads.
- Damage caused by misuse, abuse, neglect, lack of cleaning, alterations or unauthorised repair.
- Normal wear and tear including chips, scratches, abrasion and discoloration or fading.
- Warranty will be invalid if any brush heads are used other than 360PRO EVO replacement heads.
- Warranty will be void if used on any other voltage other than stated.

Thank you again for choosing the 360PRO EVO Sonic Toothbrush.