



**Maximize clarity,
ergonomics and control.**



Why PeriOptix?

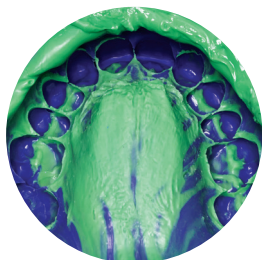
PeriOptix, owned and operated by DenMat since 2013, has been one of the top manufacturers of loupes and high-end headlight systems for over 20 years.

- Quality and cutting-edge products, like the Firefly® and LumiPro™ that offer users a variety of features to fit their needs
- Top-rated, lightweight loupe and headlight options
- Made in the U.S.A. with a California-based customer advisor team and service center

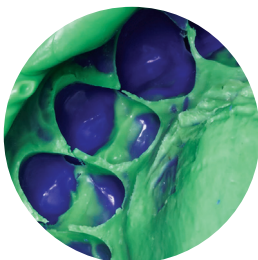
See the PeriOptix difference.

All PeriOptix optics are made with high-end, shatter-resistant glass to ensure optimum edge-to-edge clarity with a large viewing field. Our variety of magnification options and loupe styles ensure that needs are met with an elegant and customizable solution.

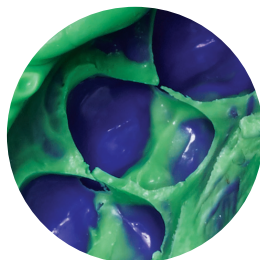
No Magnification



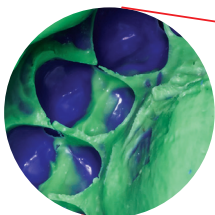
2.5x Magnification



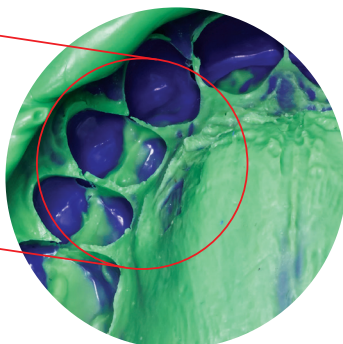
3.5x Magnification



Small Field of View



Large Field of View



Higher magnification typically results in a smaller field of view.

Loupes

Premium custom loupes with extreme edge-to-edge clarity.

Through-the-lens custom loupes are manufactured featuring cutting-edge components under strict quality standards, providing edge-to-edge sharpness and clarity with no optical aberrations or color distortion.



HDMax™ 2.5 TTL Loupes

Weight: 47 grams

Field of View: 3.5 inches

Depth of Field: 5.5 inches



HDMax™ 3.0 TTL Loupes

Weight: 48 grams

Field of View: 3.25 inches

Depth of Field: 5 inches



HDMax™ 3.5 TTL Loupes

Weight: 51 grams

Field of View: 3 inches

Depth of Field: 4.5 inches



Prismatic 4.0x TTL Loupes

Weight: 61 grams

Field of View: 2.5 inches

Depth of Field: 2.5 inches



Legacy Flip-Up Loupes



Legacy Flip-Up Loupes



Legacy Flip-Up Loupes

All measurements are taken with a PeriVista Sport Frame at a long working distance.

Frames

Feel the PeriOptix difference.

No feature is more important for comfort than the frame. PeriOptix frames have a wide variety of styles and adjustments, providing overall comfort and customizability for our wearers. PeriOptix provides advanced, high-quality frames to meet your practice needs, while suiting your preference in style.

PeriVista™ Sport Frame

The PeriVista sport frame is custom-manufactured for use with PeriOptix loupes. This is our most popular frame option because it provides wrap-around protection in a stylish design. This frame also allows the user to make adjustments to improve the fit on their face.

- 2-position adjustable nose piece
- Adjustable declination angle with 3-position temple arms
- Prescription lenses available



Adjustable declination angle with 3-position temple arms



Laser loupe clip-on inserts available! (OD >4 at 808 nm)



2-position adjustable nose piece



Matte Black



Red



Grey



Copper



Gold (Titan)



White



Blue (Petrol)



Silver



Hogies™ Frames



Classic Titanium Frames

Headlights

See what you've been missing.

PeriOptix improves visual acuity through powerful headlights that remove shadows in the oral cavity, eliminating the need for constant adjustment of overhead lighting. They provide uniform and natural-color output necessary to ensure the best outcome with your patients.

LumiPro™ Headlight System

Light Intensity: 92 lumens

Field Illumination: 90 mm

Color Temperature: 5,500 K

Weight: 8 grams



Firefly® Cordless Headlight System

Light Intensity: 43 Lumens

Field Illumination: 70 mm

Color Temperature: 5,800 K

Weight: 28 grams

Colors: Available in black, red and blue



MicroLine™ Mini

Light Intensity: 61 Lumens

Field Illumination: 75 mm

Color Temperature: 6,500 K

Weight: 9 grams



Pupillary Distance

Pupillary Distance (PD) is the measurement, in millimeters, between the centers of the pupils in each eye. This measurement can be done quickly by your local PeriOptix representative or by any optometrist. Note: If measured by an optometrist make sure the measurement is taken at infinity (∞).



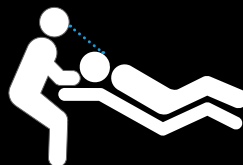
Right PD	Total PD	Left PD

Working Distance

Working Distance is the measurement at which the user is comfortable working. This distance should be calculated while the user is in an upright, and comfortable position that keeps the clinician's ergonomics in check.

Flip-Up Loupes

- S** 12 – 14 in (308 – 380 mm)
- R** 15 – 17 in (380 – 455 mm)
- L** 18 – 20 in (455 – 530 mm)
- XL** 21 – 23 in (530 – 605 mm)



Custom TTL Loupes

10 – 26 in (254 – 660 mm)

Mission Statement

PeriOptix strives to provide high quality magnification and illumination technologies that allow the dental professional to identify issues, ascertain problems, and implement solutions for their patients at an affordable cost. Our products not only enhance patient care through better visual acuity, but also promote proper ergonomics which can reduce fatigue and extend career longevity.